

Who We Are

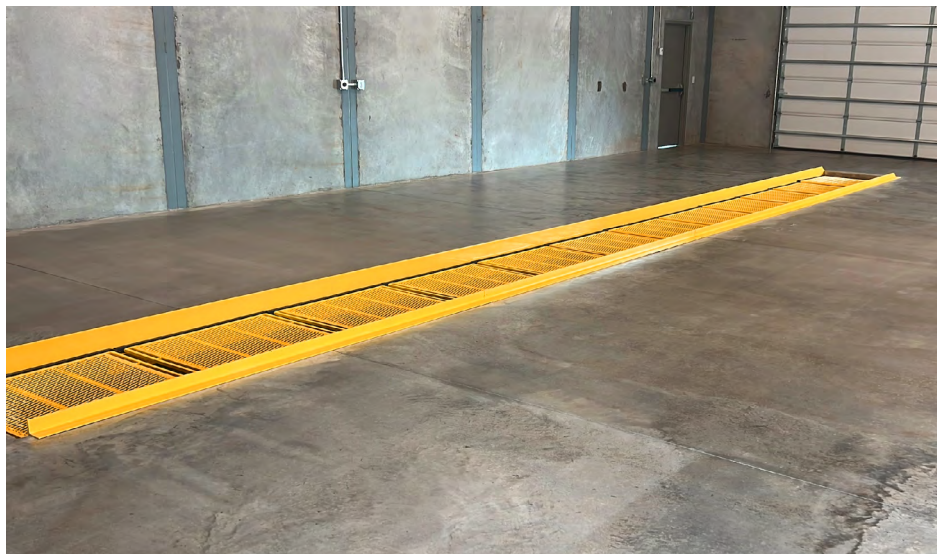
Running a fast lube shop is a high-speed operation. Every minute counts, and inefficiencies cost you money. Let us help you eliminate wasted time and bottlenecks that can eat away at your profits.

At Modulube®, we bring over 25 years of automotive and quick service expertise to help you streamline operations, reduce downtime, and maximize every bay's earning potential. From equipment to proven process design, we offer a complete, integrated solution to keep your business run at peak performance.

Don't let inefficiency drain your profits. Let us help you build a faster, smarter, and more profitable lube shop.

Table of Contents

New Stand-Up Zip Pit® System	5
Standard Zip Pit® System	7
Blazer 9000 Lift	9



Stand-Up Zip Pit[®] System

The Stand-Up Pit is custom-built to perfectly match your facility's needs. We build to any length, width and height for your shop. Designed for easy access, it offers a streamlined solution for fast, efficient undercarriage service—enhancing safety and maximizing workspace efficiency.

Benefits

- Affordable alternative to a basement pit
- Optional built-in storage for filters and tools
- Easily accommodates commercial vehicles and tractor trailers
- Easy to install

Features & Equipment

- Variable Depth 48" to 76"
- Floor Retractable Pit Safety Covers
- In-Bay Storage for Tools & Filters
- Blazer 9000 Height Restricted Lift (recessed or surfaced-mounted)
- Rolling Drain Pan (34 Gallon capacity)
- Black Non-Skid Rubber Flooring
- One Piece Metal Trim that Serves as:
 - Tire Rub Angle
 - Zip Pit Cover Slide
 - Oil Drain Roller Guide
 - Mounting for In-Bay Custom LED Lights
- Hinged Stairs for Easy Cleaning

MODULAR VEHICLE SERVICE PIT

Patent No: US D660,221 on May 22, 2012

Patent No: US D694,699 on December 3, 2013

Patent No. 8,646,226 on February 11, 2014.



Standard Zip Pit® System

The Zip Pit® is a one-piece, pre-molded fiberglass unit engineered for superior secondary containment and workflow optimization. Unlike traditional pits, its shallow pit design allows technicians to service vehicles from both the top and bottom simultaneously, increasing efficiency and reducing service time. Built for ergonomic comfort, the Zip Pit® enhances technician productivity while maintaining a safer, more organized workspace.

Benefits

- Ergonomically efficient
- Fabricated to ensure durability and comfort
- Track system to eliminate lateral movement and provide stability
- Exceeds ventilation codes

Features & Equipment

- Pre-molded, one piece fiberglass unit designed for secondary containment.
- Zip Pits can be fitted with a commercial grade, continuous duty centrifugal in-line duct fan as an option, which may be required by local safety codes.
- Complete foundation drawings are provided.
- Gliders are custom fabricated, powder-coated units designed to be durable and comfortable. Gliders are installed onto a track system to eliminate lateral movement and provide stability.
- Waste Oil Recovery Pan holds approximately 10 gallons (about 10 vehicles) of waste oil and connects to the recovery systems via a flexible hose and cam-lock connection.
- Zip Pit comes with the following components necessary to finalize installation.
 - Tire Rub Angles
 - Customized Step Grates
 - Safety Treads – Non-Slip Surface for Zip Pit Steps
 - 8 LED Custom-Designed Pit Lights with Diffusers
 - Detailed Set of Installation Instructions
- Mechanics Tools – (Optional tools per system)
 - Grease Gun - Hand-held, Battery-Operated, Cartridge Fed

MODULAR VEHICLE SERVICE PIT

Patent No: US D660,221 on May 22, 2012

Patent No: US D694,699 on December 3, 2013

Patent No. 8,646,226 on February 11, 2014.



Blazer 9000 Lift

The Blazer 9000lb height-restricted lift is both ALI and ETL-certified lift. Its innovative design eliminates the traditional cross-member support, removing obstructions in the center of the bay. This allows for unrestricted access, easier vehicle positioning, and a more efficient workflow, making it the ultimate lift for height-restricted spaces.

Benefits

- Most durable low-rise lift on the market
- Low cost of ownership
- Enables tire rotations and oil change at the same time
- Includes extension arms to support all trucks

Features & Equipment

- Converts lube bays for tire rotation service, bringing more dollars to your bottom line.
- Provides more lifting capacity (9000 lbs), which allows for servicing a wider range of vehicles.
- Mounts outside the lube service bay without interfering with the technician working below (no cross bar).
- Allows lifting height from 23" to 35" for efficient servicing of taller trucks and 4 x 4's.
- Provides flush-to-floor design for seamless drive-over option (4" floor recess required).
- Lifts popular trucks & SUV's with the heavy duty 1.5 HP Power Unit.
- Allows electronic push-button controls for smooth, single hand operation.
- Provides automatic 12-position safety locks w/air release for safe, remote lift control.
- Provides safety yellow powder coat finish for years of trouble-free service.
- Lifts vehicles safely at manufacturer's designated lift points using optional accessories.
- Meets strict industry and government quality standards through ETL-testing & ALI-certification.



Get the Oil Change...
Get the Rest of the Business!

800.433.3099 | www.modulube.com

Portland, OR



© 2025 New Century Buildings LLC. All rights reserved. Modulube is a registered trademark of New Century Buildings LLC. Zip Pit is a registered trademark of New Century Buildings LLC.